

NEW CAMPUS

First Baptist Church is one of the largest property owners in downtown Dallas, covering six city blocks bordered by San Jacinto, St. Paul, Federal and Ervay Streets. Founded in 1868, the cornerstone of the historic sanctuary was laid in 1890. Over more than a century, First Baptist's campus was formed, consisting of a hodge-podge of buildings – many of them woefully inadequate for the needs of a growing church.



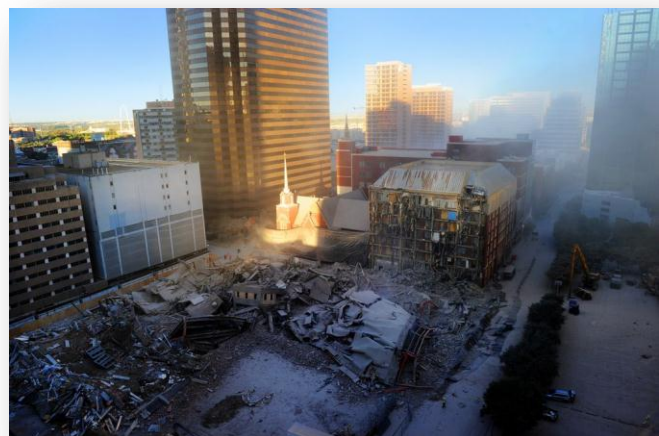
On Nov. 1, 2009, the leadership of First Baptist recommended to its congregation plans to build a new 21st-century campus, unveiling a proposed \$130 million project designed to be a re-creation, not a renovation, of the original campus.

Making way for the construction of the new campus required the removal of several original structures. On Oct. 30, 2010, experts imploded four facilities

– the Burt, Christian Education, Ruth Ray Hunt and Veal buildings – using 450 pounds of dynamite and 1,200 charges. The Truett and Mary C. buildings, directly attached to the historic sanctuary, were dismantled separately, with only the sanctuary and Criswell Center, built in 2006, remaining. The church officially broke ground on the new campus July 11, 2011.

Construction of the new campus will be complete in 2013, with the grand opening celebration to be held on Easter Sunday, March 31.

The new 500,000-square-foot campus, designed by innovative Dallas-based architecture firm, The Beck Group, will physically change the landscape of the Dallas skyline, galvanizing a clear presence of the church at the heart of the city. When completed, the campus will be united in function and design as well as open, accessible and easily identifiable as an iconic church.



Maintaining its historic roots, the new 3,000-seat Worship Center has been erected adjacent to the original sanctuary; together, the old and new are beautifully highlighted in the center of the new campus.



Capable of seating nearly twice as many individuals as the existing sanctuary, the Worship Center incorporates the latest, and some unprecedented, high-tech features to create an intimate experience with nearly one mile of pews, each designed to provide a natural line of sight to the pulpit.

A specially commissioned stained-glass cross, developed by renowned

artist Roger Hogan, provides a backdrop for the walk-through baptistery prominently placed at the front of the auditorium.

Positioned behind the choir space is a 150-foot-wide viewing screen stretching nearly two-thirds across the room and consisting of seven large high-definition projectors blended together – one of the largest of any church in the world.

The overall design of the auditorium is intended to provide a concert hall of worship in the heart of the Dallas Arts District. Though a much larger facility, the last row of seating in the new Worship Center is close to the same distance as the pulpit in the original sanctuary.

The historic sanctuary's back wall, which faces St. Paul Street, has been reconstructed based on what is believed to be its original design, which was covered by the Truett building in the early 1900s. Stained-glass artist Hogan also developed complementary stained-glass windows on the new wall.



A sweeping glass concourse, including a sky bridge over St. Paul Street, connects the new Worship Center and Horner Family Center and Parking Garage. A high-impact cross-tower and fountain, with a separate baptism pool, are surrounded by three-quarters of an acre of community space for the whole city, creating a spiritual oasis in the middle of downtown. The pedestal, which stands 68-feet high to the top of the cross, will flow water down to the pool and then to the edge, flowing over the text, "...whoever drinks of the water that I will give him shall never thirst; but the water that I will give him will become in him a well of water springing up to eternal life." The Scripture verse taken from John 4:14 is inscribed on the edge of the reflecting pool with stainless-steel lettering. The water flow, as well as undulating titan jets, can be coordinated and programmed to a custom orchestral score of hymns and spiritual songs.



The five-story Horner Family Center features a gymnasium; a theater for junior high and high school students; and indoor playgrounds for younger children. The building is dominated by glass, making it open, transparent and inviting to pedestrians and vehicular traffic passing by.

The new Horner Parking Garage, which follows the flow of the one-way streets surrounding the campus, features direct access to the Donald Preschool & Children's Suite within the Horner Family Center and Worship Center via the sky bridge.

The entire campus is expected to attain silver certification by the Leadership in Energy and Environmental Design (LEED) Green Building Rating System.